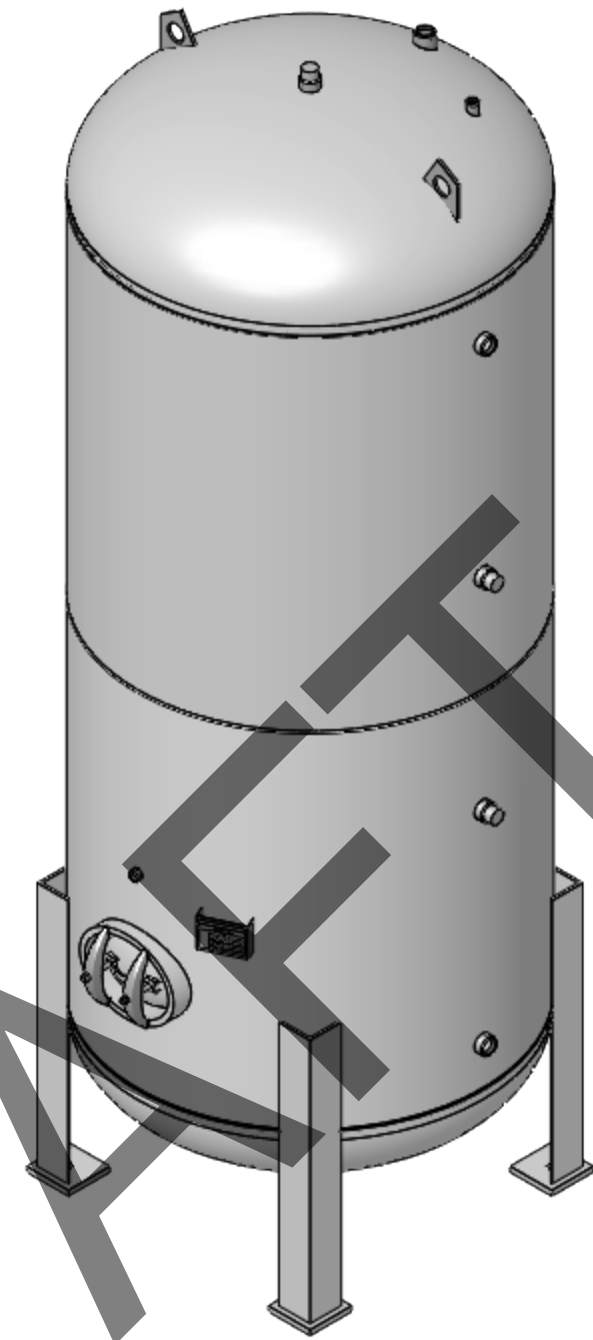
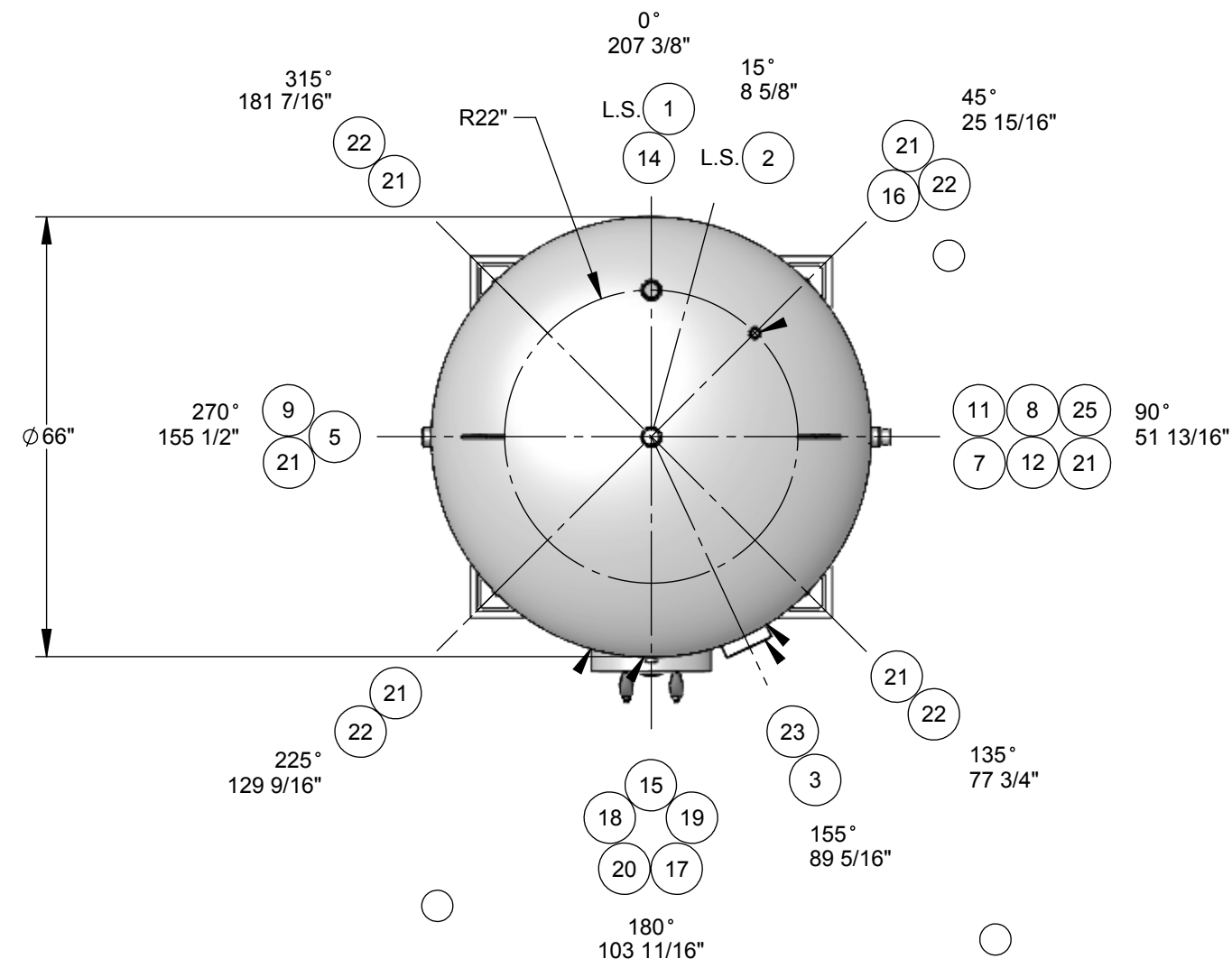


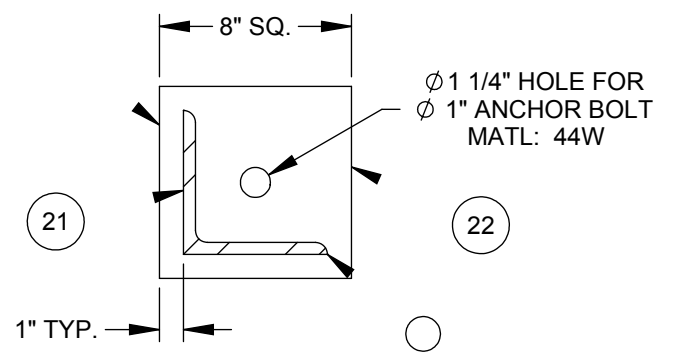
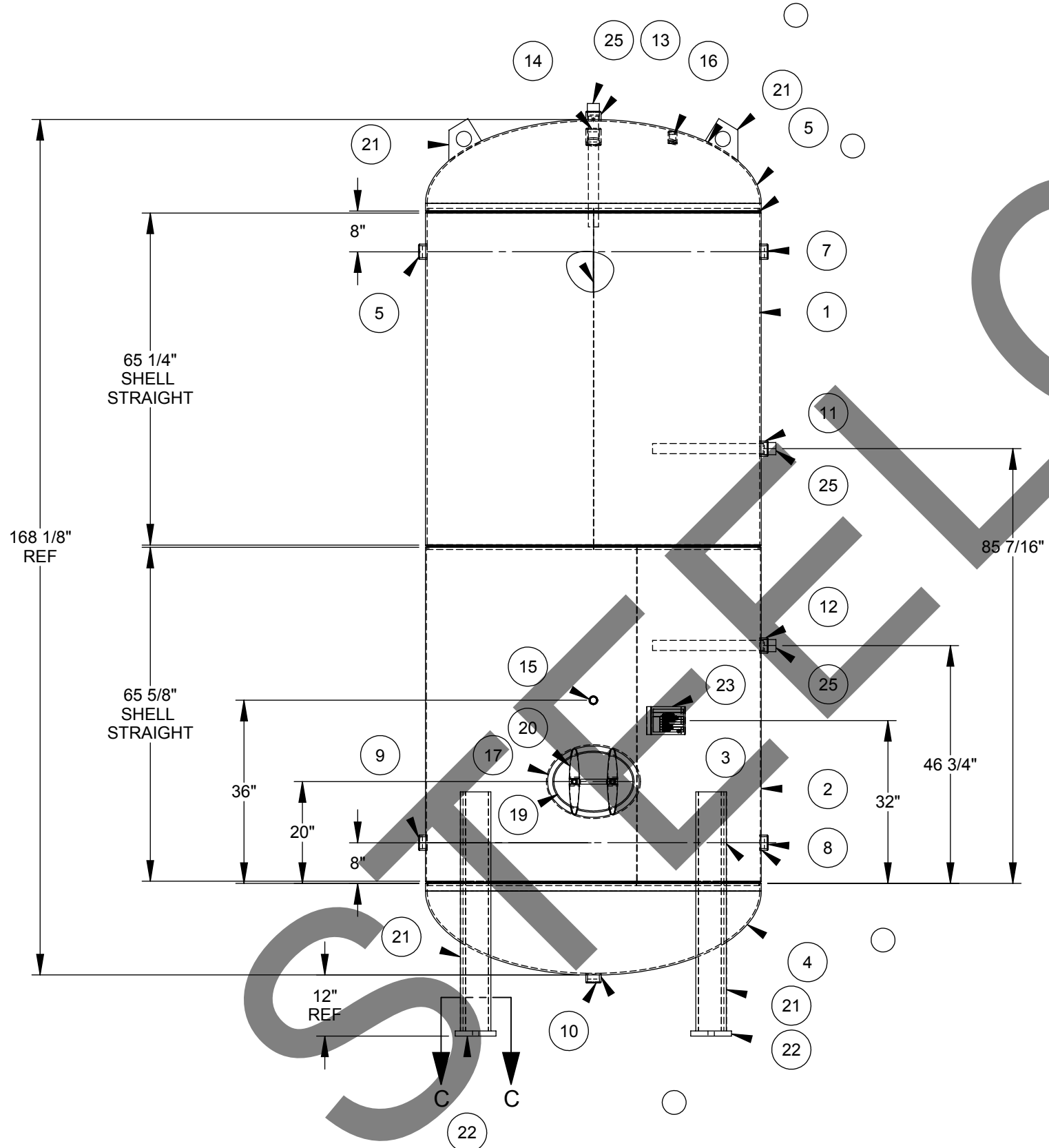
**STEELCRAFT P/N: SCDHWT66X168**



ITEM NO.	QTY.	PART NO.	DESCRIPTION
1	1	A43982-01	Cylinder: 66" O.D. x 67" Lg.
2	1	A43982-02	Cylinder: 66" O.D. x 66 1/2" Lg.
3	1	A43974 - NP	ASME NAMEPLATE
4	1	HDSE066001FJ	Head: S.E., 66" O.D.
5	1	HDSE066001FJ	Head: S.E., 66" O.D.
7	1	CPHT200300XU	Coupling: 2" NPT
8	1	CPHT200300XU	Coupling: 2" NPT
9	1	CPHT200300XU	Coupling: 2" NPT
10	1	CPHT200300XU	Coupling: 2" NPT
11	1	CPHT200300XU	Coupling: 2" NPT
12	1	CPHT200300XU	Coupling: 2" NPT
13	1	CPHT200300XU	Coupling: 2" NPT
14	1	CPFT200300XU	Coupling: 2" NPT
15	1	CPHT100300XU	Coupling: 1" NPT
16	1	CPFT100300XU	Coupling: 1" NPT
17	1	MHCO121640UC	Manway Collar: 12" x 16" x 1" x 4" Wide
18	1	GSKO121600XY	Manway Gasket
19	1	CVRB121615XC	Manway Cover
20	2		Manway Yoke c/w Bolt & Nut
21	4	A43974-L	6" X 6" X 47" LG ANGLE
22	4	A43974-FP	8" X 8" X 1" Thk. FOOT PAD WITH 1-1/4" HOLE
23	1	BKPL400055XC	Nameplate Bracket
21	2	LLTV050075QC	Lift Lug
25	3	ANDA200220XM	Anode, 2" Screwed Magnesium

**Design Specifications**

M.A.W.P.: 150 psi  
 Design Temperature: 500 °F  
 M.D.M.T.: 0°F @ 150 psi  
 Impact Testing Exempt per UG-20(f) & UCS-66  
 Design External Pressure: 0.0 psi  
 Hydrotest Pressure: 195 psi  
 Corrosion Allowance: 0.0 in.  
 Code: ASME Section VIII, Div. 1 2017  
 Approximate Volume: 8274 L  
 Approximate Weight: 5626 lbs  
 Material of Construction: Carbon Steel



**Finish**  
 Interior:  
 Line with Cement to CSA, NSF/ANSI 61 Standard  
 Exterior:  
 - Primer

**Construction Notes**  
 -Bolt holes to straddle centerlines.  
 -This vessel is designed with superimposed static, dynamic or cyclical reactions due to equipment or mechanical loading, or pressure or thermal variations = 0 lbs.  
 -This vessel is designed with thermal, mechanical, cyclical, pressure or fluid shock loadings = 0 lbs.  
 -Round or chamfer all sharp interior corners.  
 -This vessel is designed to contain a non-lethal gas, vapour or a non-lethal liquid.

TOLERANCES UNLESS OTHERWISE NOTED		<p><b>STEELCRAFT</b> Engineered Products Division</p> <p>487 Lorne Avenue East, PO Box 339, Stratford, Ontario N5A 6T1                  P. 1.800.387.6537 F. 519.271.1092 www.steelcraftinc.com</p>
MACHINING .X = ±.1" .XX = ±.02" .XXX = ±.005" ANGLES ±.5°	WELD FABRICATION <24" = ±1/16" >24" = ±1/8" ANGLES = ± 0.5°	
MAX. MACHINED SURFACE ROUGHNESS 125 MICROINCHES		3RD ANGLE PROJECTION
THIS PRINT AND DESIGN ARE THE PROPERTY OF STEELCRAFT INC. AND MUST NOT BE USED TO ITS DETRIMENT.		
PRODUCT: 66" O.D. X 168" HIGH STD PV		
DESCRIPTION: MAIN ASSEMBLY		
COMMENTS: SEE BOM FOR MATERIALS		
DRAWN: PEK	CHK'D: NTS	SCALE: NTS
DATE: 20/08/2019	DATE: -	WEIGHT: 3338
JOB No.: SCDHWT66X168		DRAWING No.: CL43982
SHEET 1 OF 1		REV. No.: 0