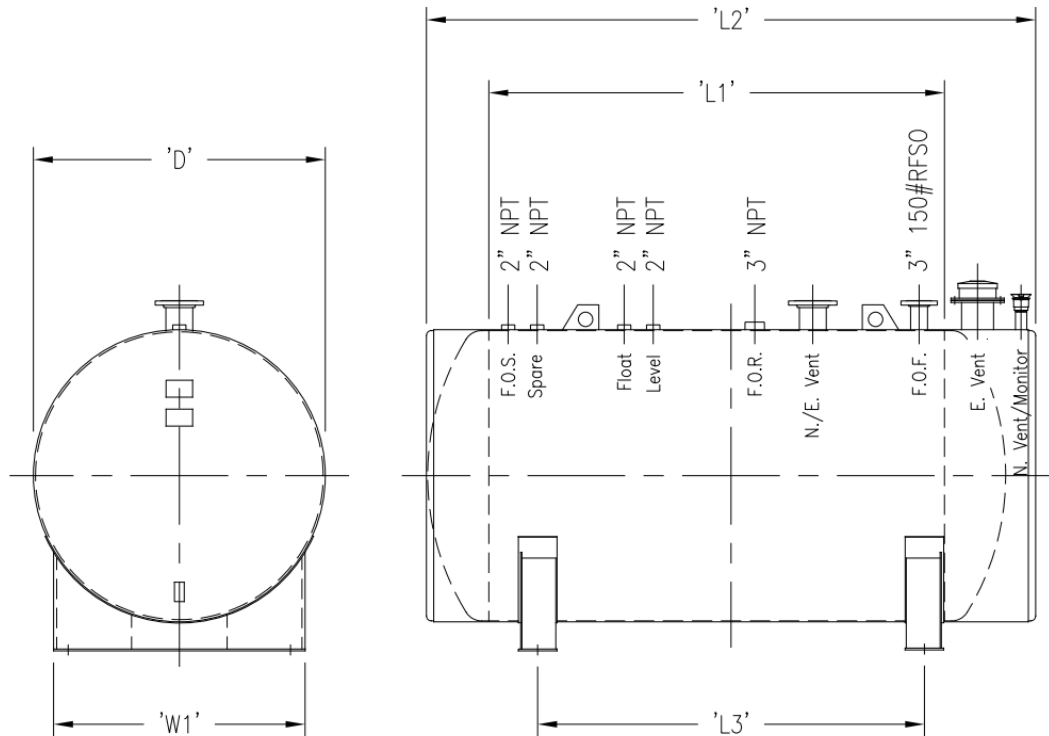


Aboveground Storage Tanks, ULC-S601, Double-Wall, Contained, Horizontal, Static Head



Part Number	Capacity (L)	Dia. (in)	L1 (in)	L2 (in)	L3 (in)	W1 (in)	Approx. Weight (lbs)
SCSHDFT01250	1250	36	67	88	51	33	1350
SCSHDFT02440	2440	48	71	97	56	44	2000
SCSHDFT05000	5000	60	94	126	80	54	3100
SCSHDFT10000	10,000	78	111	147	92	70	5500
SCSHDFT15000	15,000	78	180	217	140	70	7100
SCSHDFT25000	25,000	78	306	353	284	70	10,300

Design Notes

- 1) Each tank designed, manufactured, and labeled in accordance with ULC-S601-14
- 2) Material of construction: carbon steel (standard), stainless steel (available)
- 3) Exterior finish: SSPC-SP6, one coat primer, one coat white enamel
- 4) Rated normal vent: 2" (Up to 15,000 L), 3" (Above 15,000 L)
- 5) Rated emergency vent: 3" (< 2500 L), 4" (5000 L), 5" (10,000 L), 6" (> 10,000 L)
- 6) Each tank includes interstitial inspection pipe and liquid level sensor