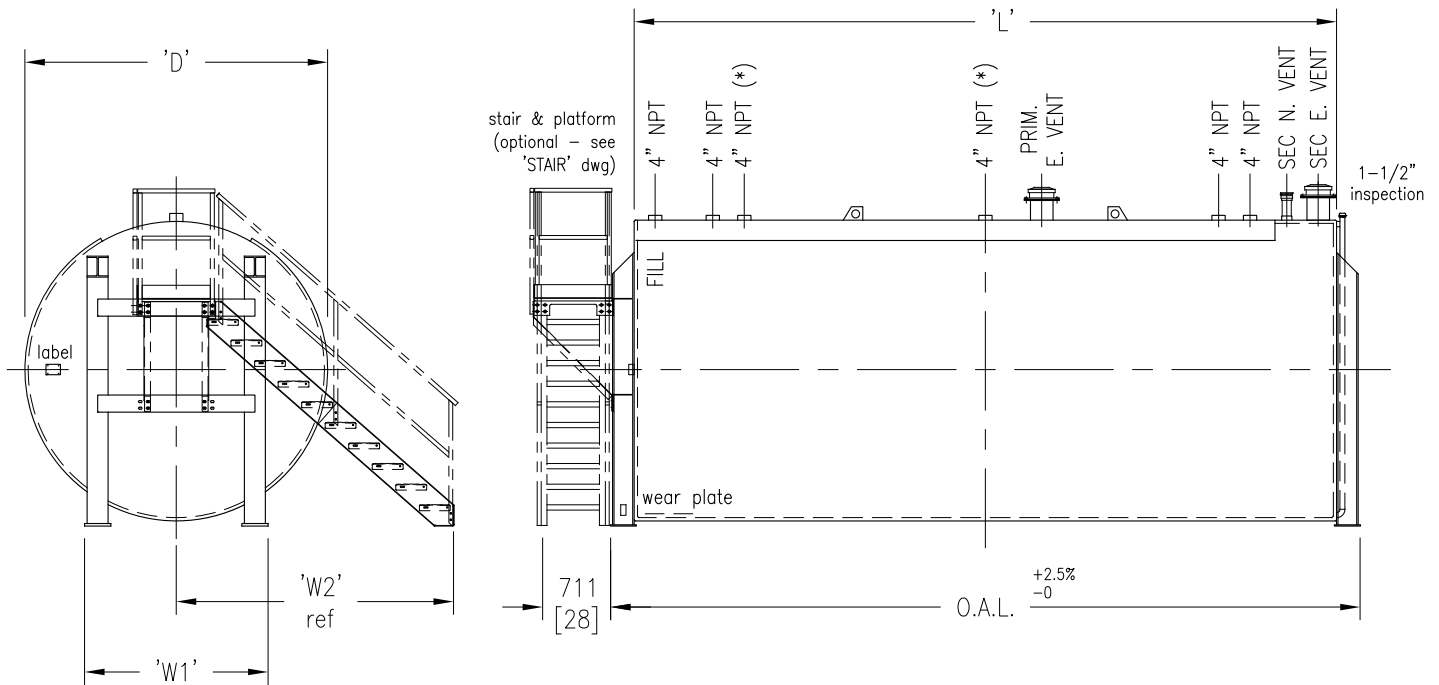


Aboveground Storage Tank
100% Integral Contained ULC-S601-14
10,000 ltr to 75,000 ltr



Part I.D.	Capacity Litre [I.G.]	Diameter 'D' mm [in]	Length 'L' mm [in]	'O.A.L.' mm [in]	'W1' mm [in]	'W2' mm [in]	Weight Kg [lb]
SCCTFT010000H	10,000 [2,200]	2000 [79]	3225 [127]	3633 [143]	1270 [50]	1803 [71]	1886 [4150]
SCCTFT015000H	15,000 [3,300]	2000 [79]	4826 [190]	5232 [206]	1270 [50]	1803 [71]	2455 [5400]
SCCTFT025000H	25,000 [5,500]	2500 [99]	5130 [202]	5588 [220]	1525 [60]	2260 [89]	4045 [8900]
SCCTFT035000H	35,000 [7,700]	2500 [99]	7062 [278]	7518 [296]	1525 [60]	2260 [89]	5420 [11925]
SCCTFT045400H	45,400 [10,000]	2921 [115]	6884 [271]	7366 [290]	1780 [70]	2718 [107]	6530 [14365]
SCCTFT050000H	50,000 [11,000]	2921 [115]	7493 [295]	7950 [313]	1780 [70]	2718 [107]	6925 [15235]
SCCTFT065000H	65,000 [14,300]	2921 [115]	9703 [382]	10160 [400]	1780 [70]	2718 [107]	8400 [18480]
SCCTFT075000H	75,000 [16,500]	2921 [115]	11278 [444]	11735 [462]	1780 [70]	2718 [107]	9509 [20920]

NOTES:

- BUILT & LABELLED TO ULC-S601-14 (100% Integral Contained)
- MATERIAL OF CONSTRUCTION: CARBON STEEL
- EXTERIOR FINISH: BLAST TO SSPC-SP6, ONE COAT PRIMER & ONE FINISH COAT WHITE ENAMEL
- EACH TANK SUPPLIED WITH DIPSTICK, GAUGE CHART & TOUCH-UP PAINT
- OPTIONAL STAIRWAY & PLATFORM ASS'Y CAN BE INSTALLED IN THREE DIFFERENT POSITIONS.

- rated normal vent: up to 15,000 ltr = 2", over 15,000 ltr = 3"
- rated emergency vent: up to 25,000 ltr = 6", over 25,000 ltr = 8"
- (*) these fittings are 2"NPT on 10,000 and 15,000 ltr tanks

STEELCRAFT
 Engineered Products Division

DESCRIPTION: Horizontal A/G 100% Integral Contained Storage Tank			
CUSTOMER:			
PROJECT:			
ITEM NO.: see chart	DRN.: HK 8-FEB-17	SCALE: NTS	9
JOB NO.:	DWG. NO.: S601-H100C-2		