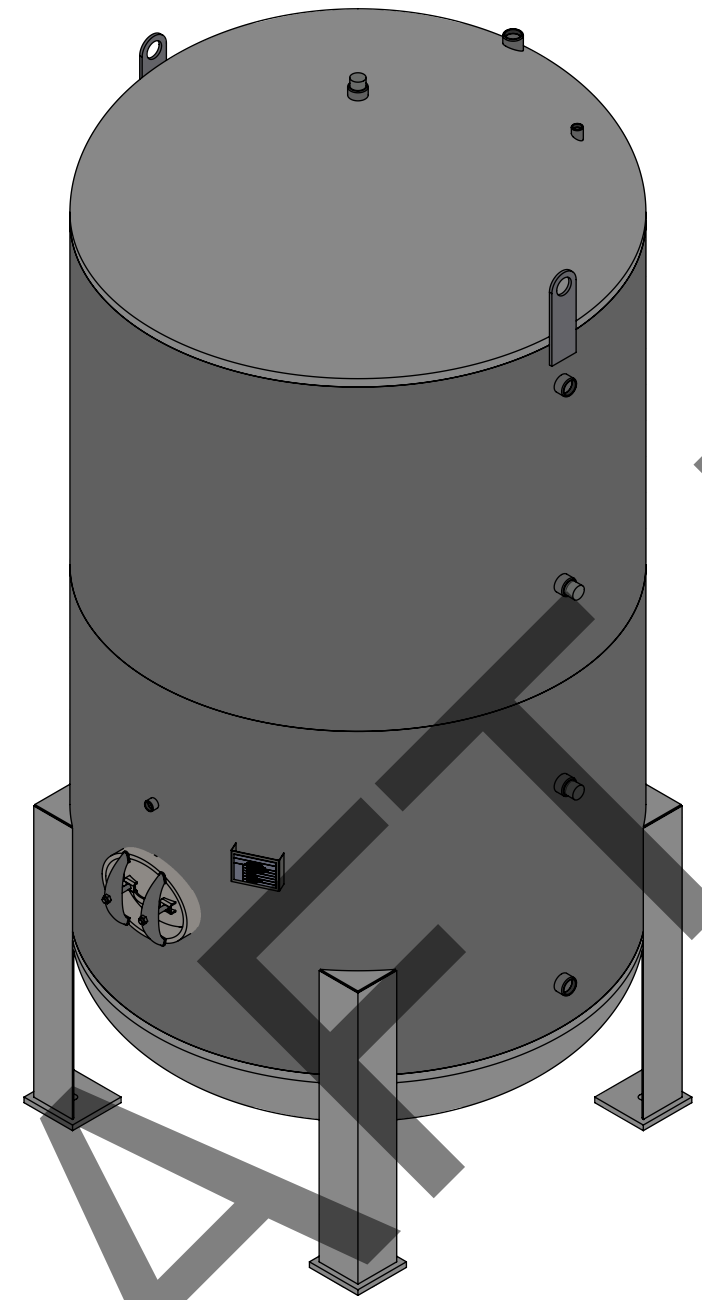
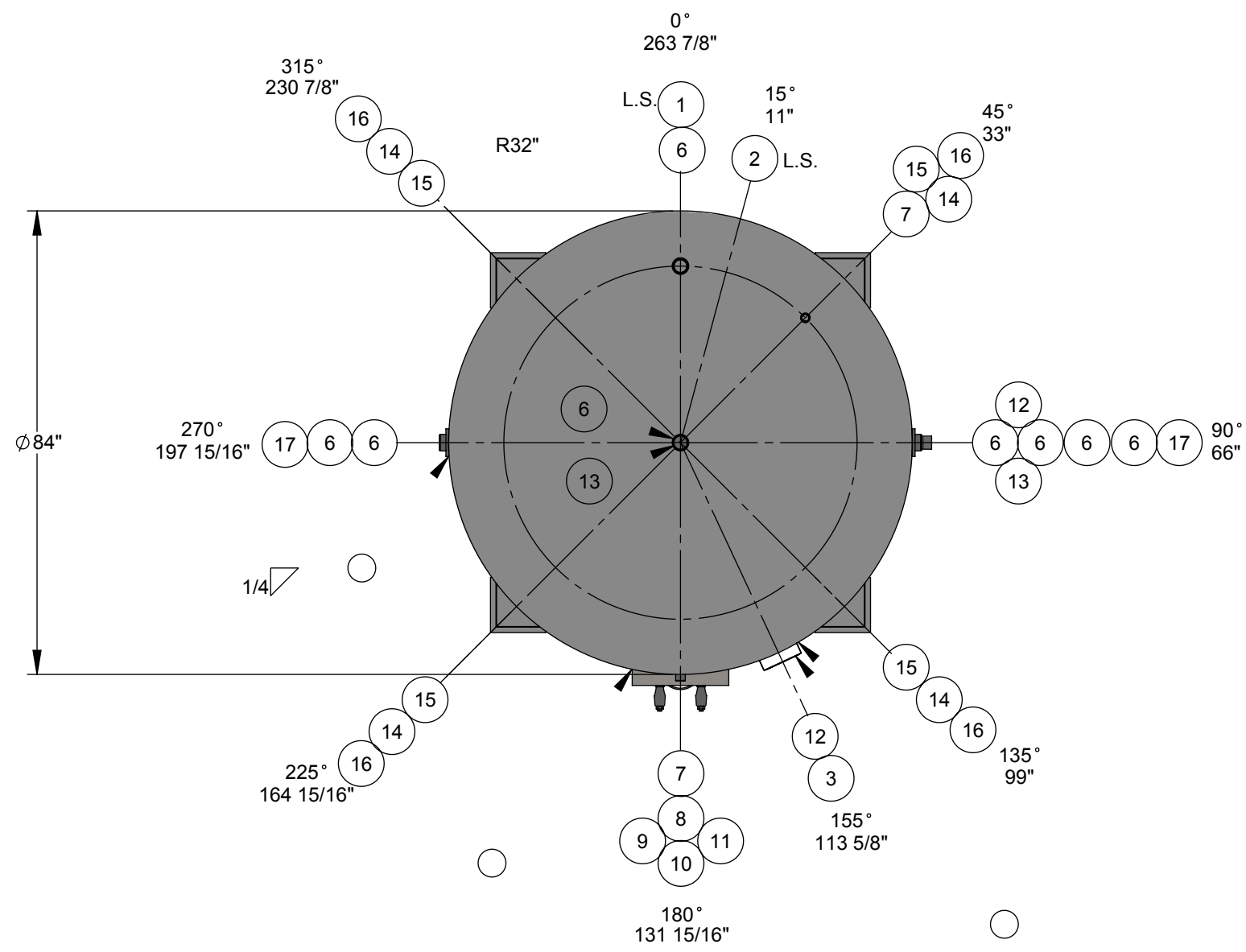


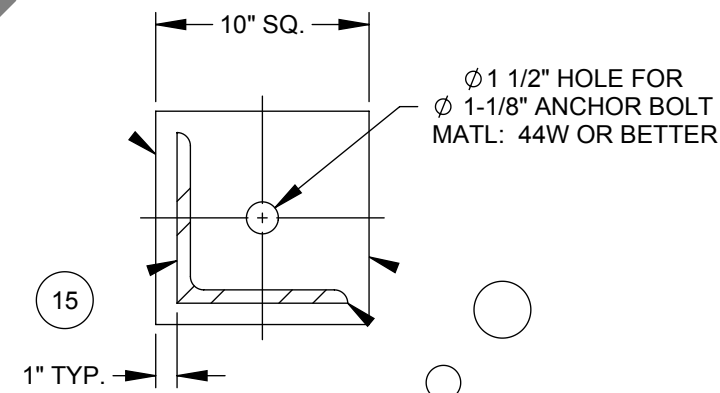
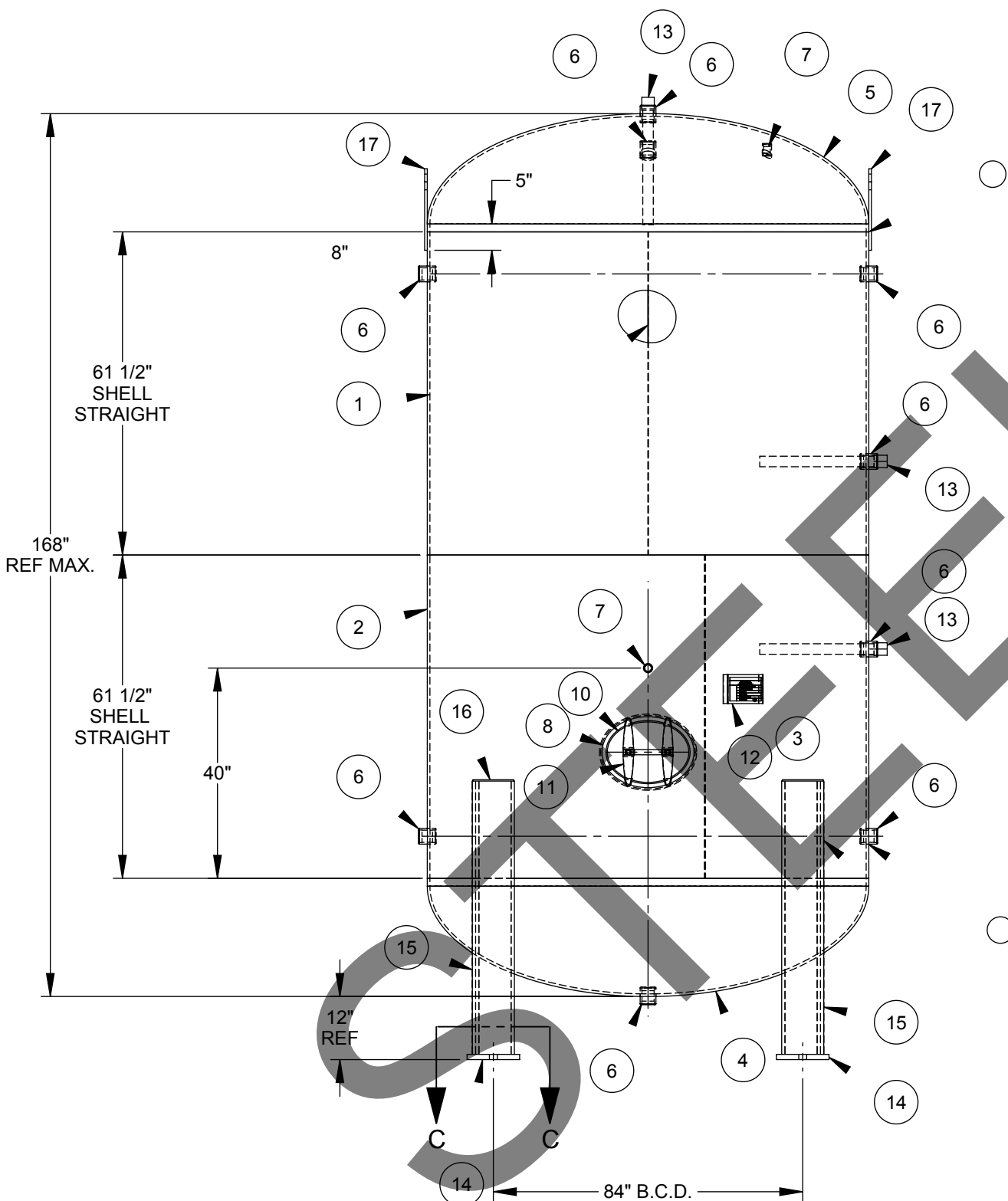
# STEELCRAFT P/N: SCDHWT84X168



ITEM NO.	QTY.	PART NO.	DESCRIPTION
1	1	A44023-01	Cylinder: 84" O.D. x 62" Lg.
2	1	A44023-02	Cylinder: 84" O.D. x 62 1/4" Lg.
3	1	A44018-NP	ASME NAMEPLATE
4	1		Head: S.E., 84" O.D.
5	1		Head: S.E., 84" O.D.
6	9	CPFT200300XU	Coupling: 2" NPT
7	2	CPFT100300XU	Coupling: 1" NPT
8	1	MHCO121640TC	Manway Collar: 12" x 16" x 3/4" x 4" Wide
9	1	GSKO121600XY	Manway Gasket
10	1	CVRB121615XC	Manway Cover
11	2		Manway Yoke c/w Bolt & Nut
12	1	BKPL400055XC	Nameplate Bracket
13	3	ANDA200220XM	Anode, 2" Screwed Magnesium
14	4	A44018-FP	10" X 10" X 1" Thk. FOOT PAD WITH 1-1/2" HOLE
15	4	A44018-L	8" X 8" X 52" LG ANGLE
16	4	A44023-LC	Leg Cap: 1/4" Thk.
17	2	A44023-LL	Lift Lug.

### Design Specifications

M.A.W.P.: 150 psi  
 Design Temperature: 500 °F  
 M.D.M.T.: 0°F @ 150 psi  
 Impact Testing Exempt per UG-20(f) & UCS-66  
 Design External Pressure: 0.0 psiHydrotest  
 Pressure: 195 psiCorrosion Allowance: 0.0 in.  
 Code: ASME Section VIII, Div. 1 2017  
 Approximate Volume: 13,225 L  
 Approximate Weight: 9921 lbs  
 Material of Construction: Carbon Steel



### Finish

Interior:  
 Line with Cement to CSA, NSF/ANSI 61 Standard  
 Exterior:  
 -Primer

### Construction Notes

- Bolt holes to straddle centerlines.
- This vessel is designed with superimposed static, dynamic or cyclical reactions due to equipment or mechanical loading, or pressure or thermal variations = 0 lbs.
- This vessel is designed with thermal, mechanical, cyclical, pressure or fluid shock loadings = 0 lbs.
- Round or chamfer all sharp interior corners.
- This vessel is designed to contain a non-lethal gas, vapour or a non-lethal liquid.

### TOLERANCES UNLESS OTHERWISE NOTED

MACHINING .X = ±.1" .XX = ±.02" .XXX = ±.005" ANGLES ±.5°	WELD FABRICATION <=24" = ±1/16" >24" = ±1/8" ANGLES = ± 0.5°
MAX. MACHINED SURFACE ROUGHNESS 125 MICROINCHES	3RD ANGLE PROJECTION

# STEELCRAFT

Engineered Products Division

487 Lorne Avenue East, PO Box 339, Stratford, Ontario N5A 6T1  
 P. 1.800.387.6537 F. 519.271.1092 www.steelcraftinc.com

THIS PRINT AND DESIGN ARE THE PROPERTY OF STEELCRAFT INC. AND MUST NOT BE USED TO ITS DETRIMENT.

PRODUCT: 84" O.D. X 168" HIGH STD PV

DESCRIPTION: MAIN ASSEMBLY

COMMENTS: SEE BOM FOR MATERIALS

DRAWN: PEK	CHK'D: PEK	SCALE: NTS	JOB No.:	DRAWING No.:	SHEET 1 OF 1	REV. No.:
DATE: 28/08/2019	DATE: -	WEIGHT: 7645	SCDHWT84X168	CL44023		0