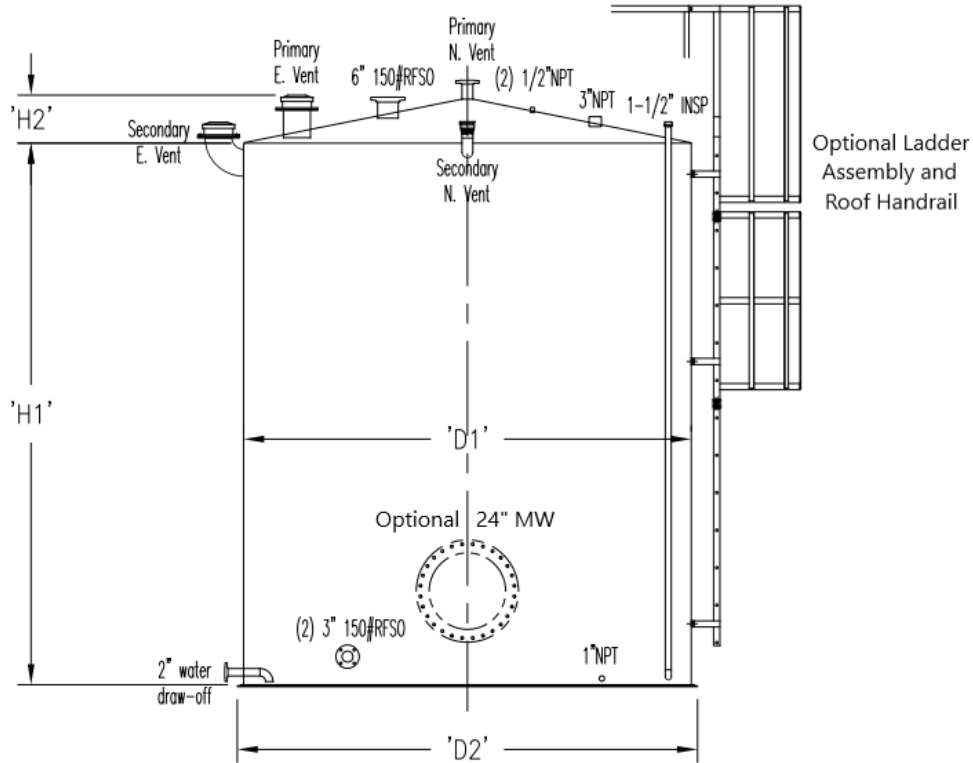


Aboveground Storage Tanks, ULC-S601, Double-Wall, Contained, Vertical



Part Number	Capacity (L)	D1 (in)	D2 (in)	H1 (in)	H2 (in)	Approx. Weight (lbs)
SCCTFT015000V	15,000	99	101	122	16	5700
SCCTFT025000V	25,000	99	101	202	16	8400
SCCTFT035000V	35,000	115	118	210	17	11,600
SCCTFT050000V	50,000	115	118	300	17	15,700
SCCTFT060000V	60,000	123	126	314	18	17,600
SCCTFT075000V	75,000	138	141	312	20	20,500
SCCTFT090000V	90,000	138	141	374	20	23,900
SCCTFT100000V	100,000	138	141	414	20	26,000
SCCTFT125000V	125,000	150	153	438	21	30,300
SCCTFT150000V	150,000	150	153	525	21	35,400

Design Notes

- 1) All tanks designed, manufactured, and labeled in accordance with ULC-S601-14
- 2) Material of construction: carbon steel (standard), stainless steel (available)
- 3) Exterior finish: SSPC-SP6, one coat primer, one coat white enamel
- 4) Rated normal vent: 3" (all listed sizes)
- 5) Rated emergency vent: 10" (15,000 - 35,000 L), 12" (Above 35,000 L)
- 6) Each tank includes interstitial inspection pipe and liquid level sensor