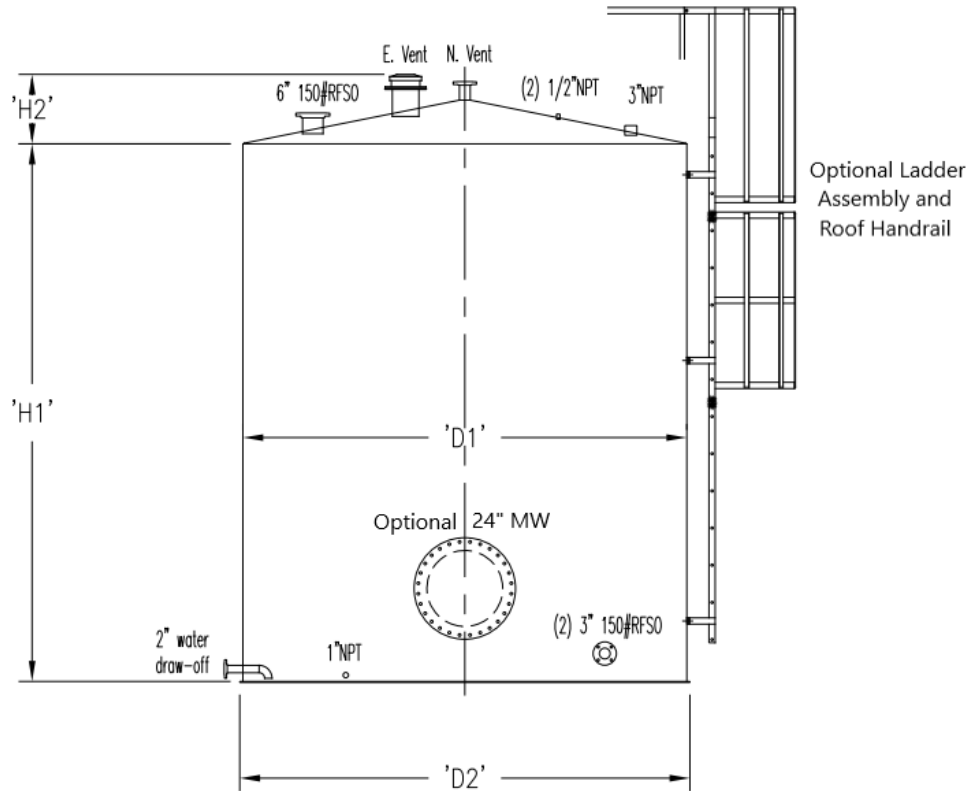


**Aboveground Storage Tanks, ULC-S601, Single-Wall, Vertical**



Part Number	Capacity (L)	D1 (in)	D2 (in)	H1 (in)	H2 (in)	Approx. Weight (lbs)
SCSWFT015000V	15,000	99	101	122	16	3100
SCSWFT025000V	25,000	99	101	202	16	4400
SCSWFT035000V	35,000	115	118	208	17	6800
SCSWFT050000V	50,000	115	118	298	17	9100
SCSWFT060000V	60,000	123	126	312	18	10,200
SCSWFT075000V	75,000	138	141	312	20	11,900
SCSWFT090000V	90,000	138	141	372	20	13,700
SCSWFT100000V	100,000	138	141	412	20	15,000
SCSWFT125000V	125,000	150	153	435	21	17,600
SCSWFT150000V	150,000	150	153	522	21	20,500

**Design Notes**

- 1) All tanks designed, manufactured, and labeled in accordance with ULC-S601-14
- 2) Material of construction: carbon steel (standard), stainless steel (available)
- 3) Exterior finish: SSPC-SP6, one coat primer, one coat white enamel
- 4) Rated normal vent: 3" (all listed sizes)
- 5) Rated emergency vent: 10" (15,000 - 35,000 L), 12" (Above 35,000 L)