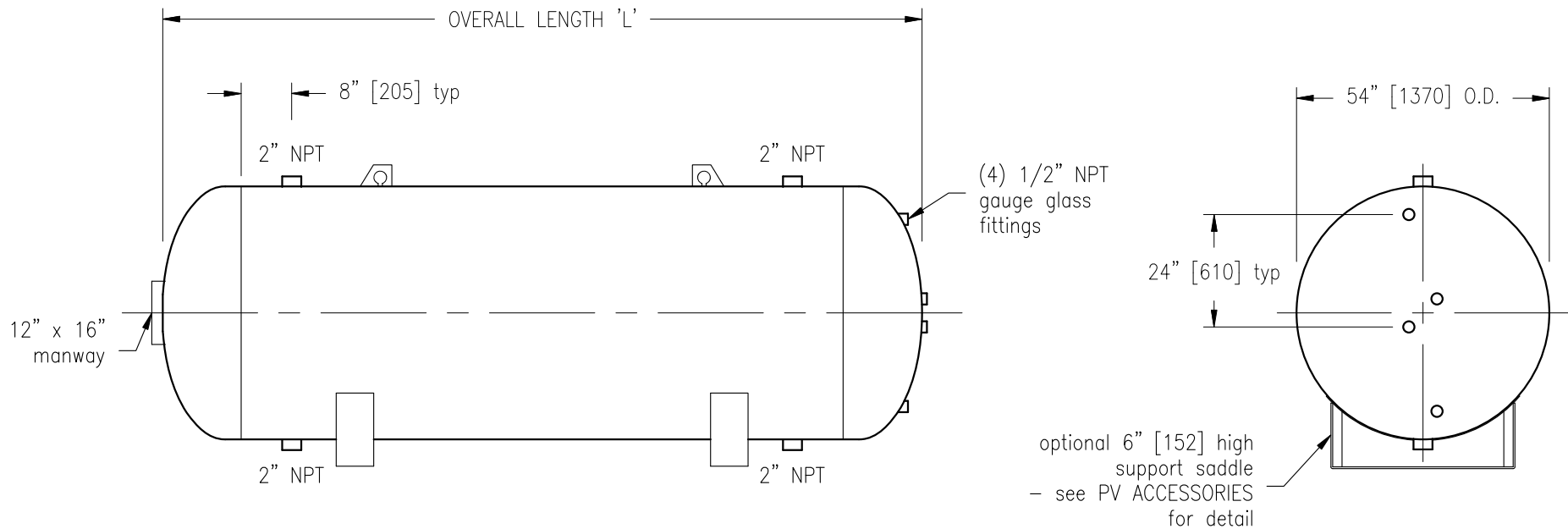


- NOTE:
- FINISH: INTERIOR AS WELDED, EXTERIOR PRIMER or INTERIOR AND EXTERIOR GALVANIZED
 - MATERIAL OF CONSTRUCTION: CARBON STEEL
 - BUILT TO ASME SECTION VIII DIV.1, 'U' STAMP.
 - THIS VESSEL IS DESIGNED WITH NO EXTERNAL LOADINGS.

OVERALL LENGTH 'L' in [mm]	VOLUME ig [ltr]	WEIGHT lbs [Kg]	GAUGE GLASS Qty	150 psig
72 [1830]	504 [2291]	1455 [660]	2	SCPSET54X072H
84 [2135]	601 [2732]	1636 [742]	2	SCPSET54X084H
96 [2440]	697 [3169]	1817 [824]	2	SCPSET54X096H
108 [2745]	794 [3610]	1997 [906]	2	SCPSET54X108H
120 [3050]	891 [4050]	2178 [988]	2	SCPSET54X120H
132 [3350]	988 [4492]	2359 [1070]	2	SCPSET54X132H
144 [3660]	1085 [4932]	2540 [1152]	2	SCPSET54X144H
156 [3960]	1181 [5369]	2721 [1234]	2	SCPSET54X156H
168 [4270]	1278 [5810]	2901 [1316]	2	SCPSET54X168H
180 [4570]	1375 [6250]	3082 [1398]	2	SCPSET54X180H



STEELCRAFT
Engineered Products Division

DESCRIPTION: ϕ 54" Horizontal Air Cushion/Expansion Tank

CUSTOMER:

PROJECT:

ITEM NO.:

DRN.: HK 13-APR-15

SCALE: NTS

JOB NO.:

DWG. NO.: ACH54



487 Lorne Avenue East, Stratford, ON, N5A 6T1