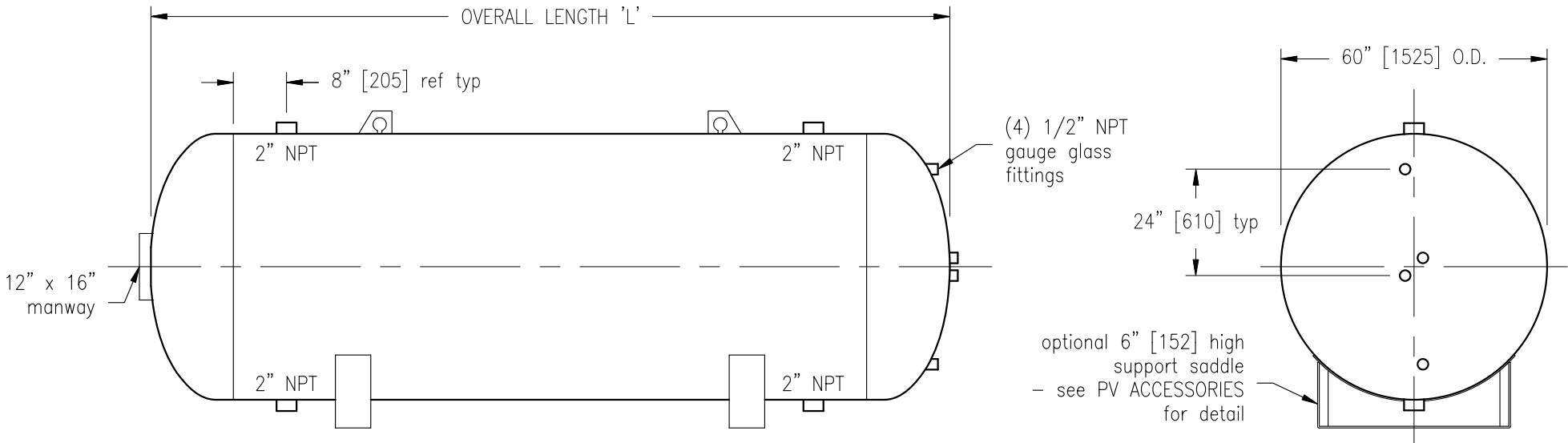


- NOTE:
- FINISH: INTERIOR AS WELDED
 - EXTERIOR FINISH: PRIMER
 - MATERIAL OF CONSTRUCTION: CARBON STEEL
 - BUILT TO ASME SECTION VIII DIV.1, 'U' STAMP.
 - THIS VESSEL IS DESIGNED WITH NO EXTERNAL LOADINGS.

OVERALL LENGTH 'L', in [mm]	VOLUME ig [ltr]	WEIGHT lbs [Kg]	GAUGE GLASS Qty	150 psig
72 [1830]	615 [2796]	1640 [744]	2	SCPSET60X072H
84 [2135]	735 [3341]	1841 [835]	2	SCPSET60X084H
96 [2440]	854 [3882]	2042 [926]	2	SCPSET60X096H
108 [2745]	974 [4428]	2243 [1017]	2	SCPSET60X108H
120 [3050]	1094 [4973]	2444 [1109]	2	SCPSET60X120H
132 [3350]	1214 [5519]	2645 [1200]	2	SCPSET60X132H
144 [3660]	1333 [6060]	2846 [1291]	2	SCPSET60X144H
156 [3960]	1453 [6605]	3047 [1382]	2	SCPSET60X156H
168 [4270]	1573 [7151]	3248 [1473]	2	SCPSET60X168H
180 [4570]	1692 [7692]	3449 [1564]	2	SCPSET60X180H
192 [4880]	1812 [8238]	3650 [1655]	2	SCPSET60X192H
204 [5180]	1932 [8783]	3851 [1747]	2	SCPSET60X204H



STEELCRAFT
Engineered Products Division

DESCRIPTION: ϕ 60" Horizontal Air Cushion/Expansion Tank

CUSTOMER:

PROJECT:

ITEM NO.:

DRN.: HK 13-APR-15

SCALE: NTS

JOB NO.:

DWG. NO.: ACH60

2

487 Lorne Avenue East, Stratford, ON, N5A 6T1